



CO₂ Laser

UNILAS Touch

Company Profile

Limmer Laser is a German owner-managed company, specializing in the design, manufacture and sale of medical lasers and accessories. Our laser devices cover all major disciplines of human, dental and veterinary medicine.

The product range includes CO₂ Lasers, Diode Lasers and Specialty Lasers. Our philosophy is to create multipurpose, integrated and highly functional work stations. A strong emphasis on continuous research and development gives access to the latest technology.

We have a strong emphasis on research and development, production, service and training. Working in conjunction with hospitals and physicians is just as important as good communication. Product quality is our No. 1 priority: Our company is certified to the stringent European Quality Standard EN ISO 13485:2016.

Limmer Laser GmbH

Schwarzschildstr. 1 • D-12489 Berlin • Germany
Tel. +49 (0)30 - 6392 5570 • Fax +49 (0)30 - 6392 5580
info@limmerlaser.de • www.limmerlaser.de

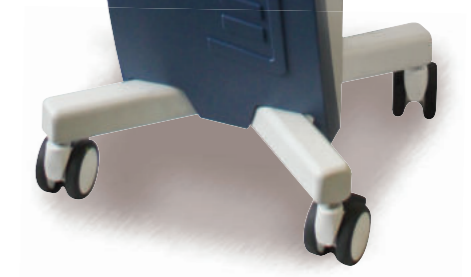


Technical specifications

Laser type	CO ₂ Laser with TEM ₀₀ precision, λ 10600 nm (Laser class 4)	Pilot beam	Red (635 nm), adj. brightness (<10 mW) for modern microscopes & colposcopes
Operating modes	Continuous Wave (CW), Enhanced SuperPulse, Ultra-Short Pulser Mode	Assistance	Treatment assistants with parameter sets for medical applications
Activation profiles	Continuous, single pulse (0.1 ms - 5 s), pulse repetition (0.1 ms - 5 s)	Cooling & filters	Low noise air cooling, purge air system with multi-stage bacterial filter
Beam delivery	Free-moving articulated arm with 7 joints, 360° rotation and extensive working range of up to 150 cm (option: additional fiber port)	Connectivity	USB port for treatment protocols & software updates, scanner system, TouchLink wireless remote control of smoke evacuator VACULAS, FlexSwitch, electrical supply 110 - 120 V / 230 - 240 V
Control panel	Large 10.4" True Color Touch Panel	Size & weight	44 x 44 x 135 cm (W x D x H), 49 kg

Technical changes reserved

The 4th Laser Generation Precise, Powerful and Interdisciplinary



Made
in
Germany

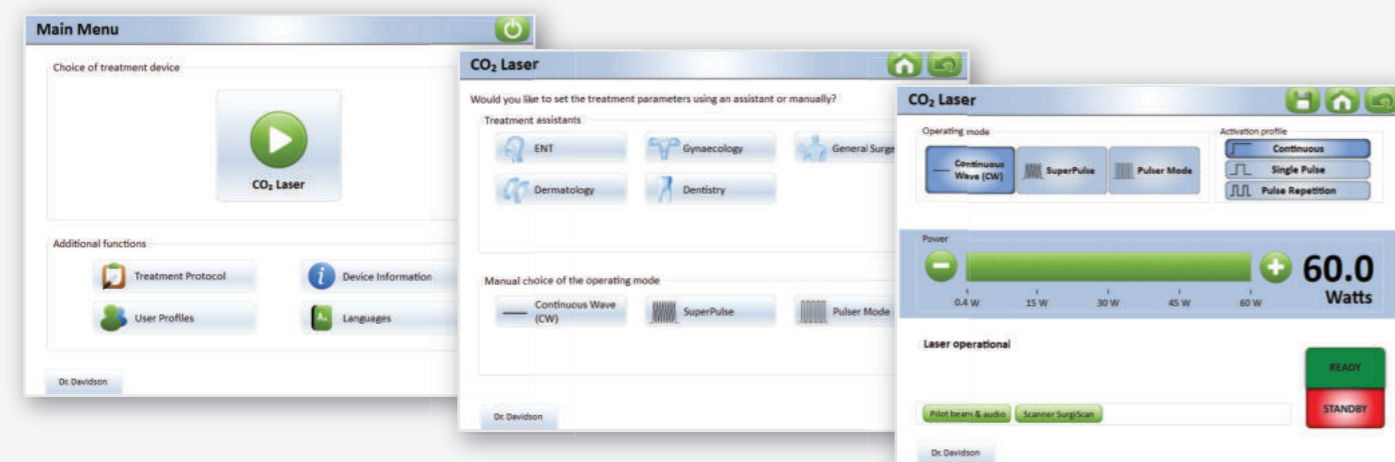
UNILAS Touch

The smart choice for professional users

UNILAS Touch One Cost-effective entry-level model	UNILAS Touch Pro High-power advanced model
30 or 40 Watt @ 10600 nm	60, 70 or 80 Watt @ 10600 nm

Choose your upgrades:

- + SurgiScan X2 Scanner System
- + TouchLink remote control of smoke removal
- + Dual Port Upgrade Kit for flexible fibers
- + FlexSwitch intelligent footswitch



One system for many uses

- ENT**
Larynx and pharynx surgery (e.g. tumors, vocal cord cysts), stapes surgery, LAUP, nasal polyps, rhinophyma, tonsil surgery, fiber-assisted cutting of tissue, etc.
- Gynecology**
Condylomata, dysplasia, carcinoma, papilloma, laparoscopy, cysts, leukoplakia, intravaginal therapy (e.g. vaginal atrophy), lichen sclerosus, labiaplasty, etc.
- Dermatology**
Skin rejuvenation, keloid and hypertrophic scars, fibroma, stretch marks, pigmented lesions, condylomata, blepharoplasty, etc.
- General surgery**
Coagulation, cutting and ablation of tissue

- Large 10.4" True Color Touch Panel
infinite space for individual user programs
- Innovative UltraSharp Laser Technology
more precision and improved tissue effects
- High output power in all operating modes
work faster with less collateral damages
- Interactive treatment assistant
intuitive access to all operating parameters



High precision micromanipulators



Specialized handpiece sets



Flexible fibers with pilot beam

Better by design

- Delivers energy to tissue by handpieces, flexible fibers and micromanipulator
- Fast electronic switching between articulated arm and flexible fiber output
- Broad range of specialized accessories available
- Low total cost of ownership, highest optical precision
- High quality product with long lifetime



Wireless remote control of smoke evacuator VACULAS



Ultra-precise μs Scanner SurgiScan X2

The essential accessory for automated treatments of large areas. Enables precise cutting, ablation and fractional therapy, including newly developed Erbium ablation mode. Scanning handpieces for dermatology, ENT and gynecology (90° / 360° reflector) available.



Made in Germany